

PIPE BEVELING MACHINE

Pipe beveling machines for weld prep

- Ergonomic
- No noise, dust, sparks
- Accurate repetitive work
- Fast setup
- Powerfull and durable
- High productivity
- High quality weld prep



Low weight



Perfect tooling



Strong motor

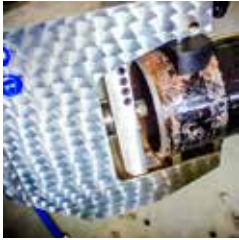


Long lifetime

TECHNICAL DATA

of pipe beveling machine MF3-25 XL OD mount

Field of applications



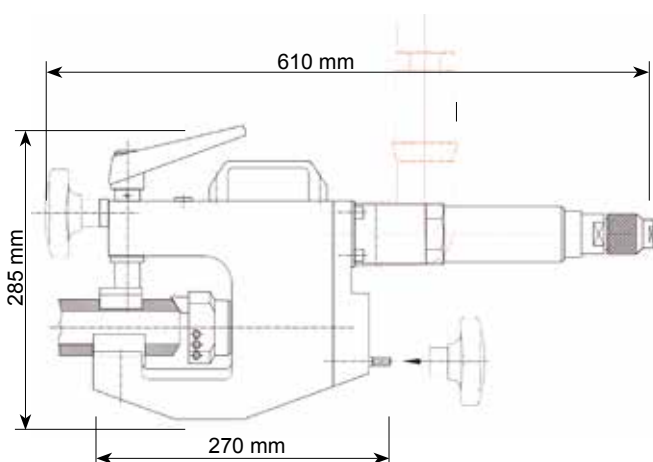
The pipe beveling machine is used for weld prep of tube and pipe end in pipe welding applications. Especially for heavy wall pipes the machining is fast and accurate. Pipe beveling and facing can be done in one operation with special tool holders. Operated by one worker the pipe beveling machine can be used in the workshop and on site with low weight due to aluminum construction. High speed beveling and facing with special tool bits provides economical manufacturing of pipes, tubes and headers.




Specifications

Specifications MF3-25 XL			Pneumatic Motor		
Working range ID-OD	12,5 - 76,1 mm	0,496 - 2,996"	Power	740 W	1,0 HP
Clamping range OD-OD	20 - 76,1 mm	0,787 - 2,996"	Air pressure	6 bar(g)	87 psi
Max. wall-thickness	15 mm	0,58"	Air consumption	0,96 m ³ /min	33,9 cfm
Feed	25 mm	0,59"	Air hose connection	1/4"	1/4"
Weight with electric motor	10 kg	21,2 lbs	Features	speed control	
Weight with pneumatic motor	8,8 kg	18,5 lbs	Electric Motor		
Weld prep	facing, V-prep, J-prep, counter boring		Power consumption	1.500 W (110V/230V)	2,0 HP
Materials	steel, stainless steel, duplex, high alloyed		Features	restart and overload protection, speed adjustment, torque control	
Tooling	tool bits, TiN inserts, custom bits				
Machine body	Aluminium alloy				


Dimensions




Options

 Tube fin removal



 Angle drive for narrow space applications



 Easy-to-fit Solutions

