

PIPE CHAMFERING AND FACING MACHINE

Pipe chamfering machines for pipe preparation

- High cutting capacity
- Quick and secure clamping
- Rugged and compact type of construction
- Easy handling

Video
of application



MF4-R

Field of application

The portable pipe chamfering and facing machines are used for pipe preparation of the pipe edge in pipe welding applications. The portable machine is used for facing and chamfering the pipe end. Especially for heavy wall pipe the pipe machining is fast and accurate. Pipe chamfering and facing can be done in one operation with special tool holders. Operated by one man the pipe beveling machines can be used in the workshop and on site with low weight due to aluminium construction. High speed chamfering and facing with special tool bits provides economical manufacturing of pipes, tubes and headers.

TECHNICAL DATA

of pipe chamfering and facing machine for pipe bevel operations

Working Range:

Pipe outside diameter:	min. 48,3 mm max. 88,9 mm
Pipe wall thickness*:	max. 10,0 mm
Spindle stroke:	15,0 mm
Pipe preparation form of pipe edge (depends on pipe welding process):	facing, chamfering of butt weld and U prep weld

Weight:

with pneumatic drive:	approx. 5,8 kg
with electric drive:	approx. 7,0 kg

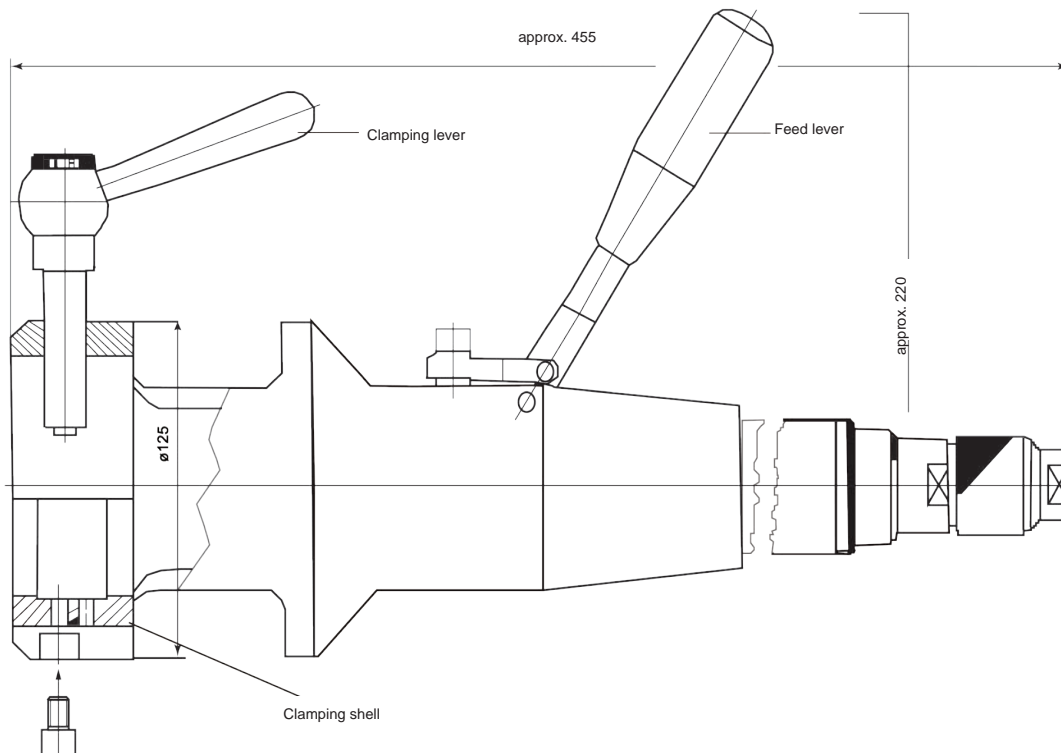
Pneumatic geared motor:

Power:	740 W at 6 bar / 400 W at 4 bar
Air consumption:	0,96 m ³ /min
Compressed air connection:	R 1/4"
Feed:	manual

Electric geared motor:

Power consumption / connection voltage: 1200 W with 230V - 50Hz

~(singlephase - alternating current)
II - all-insulated
Protective class



BLADE & TOOL TIP HOLDER

with adjustable cutting tools for portable pipe chamfering machine MF4-R



091501105
HSS
Pipe facing and pipe
bevel tool tip 0°



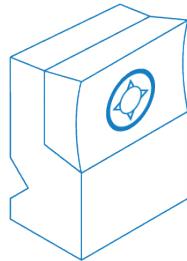
091501028
HSS
Pipe facing and pipe
bevel tool tip 30°



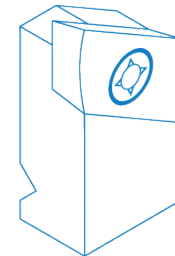
091501106
HSS
Pipe facing and pipe bevel
tool tip 0° (TIN)



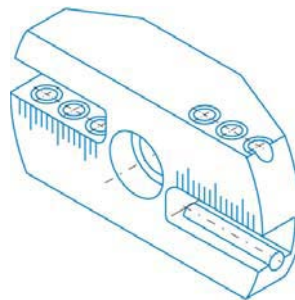
091501108
HSS
Pipe facing and pipe bevel
tool tip 30° (TIN)



091502138
Pipe preparation tool tip
holder 0°



091502136
Pipe preparation tool tip
holder 30°



091502118
Chamfering tool holder size 1
Working range: di 25 - do 88,9 mm



091502141
HSS-blade 0°



091502140
HSS-blade 30°



091502162
10° - internal



091502163
8° - internal



091502135
10° - internal



091502160
DIN 2559-4



091502148
DIN 2559-3



091502154
DBS 34-R3



091502159
DBS 34-R5

Special pipe edge blades and chamfering
tools on request!